

installation guide

Key fob



INSTALLATION GUIDE KEY FOB

Congratulations on the purchase of your Egardia key fob.

Website Egardia
www.egardia.com

Customer Service

Please visit www.egardia.com if you would like further information about the installation and use of Egardia. The answers to a number of frequently asked questions can be found at www.egardia.com/userquestions.

This package has been put together with care. Please contact our customer service if you would like any help during installation or if something is missing from the package. Never return a package without prior instruction from our customer service.

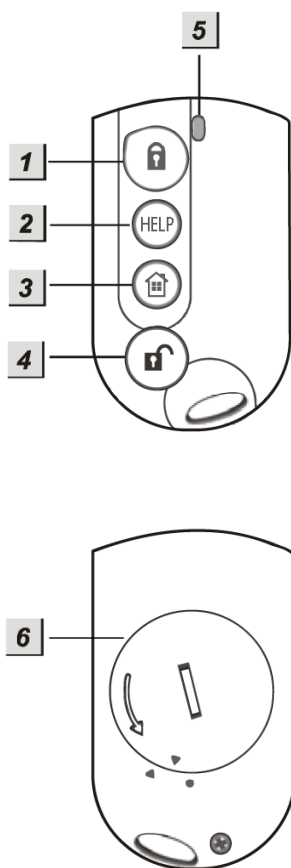
Key fob

The key fob allows you to easily turn your alarm system on or off at the push of a button. The key fob also features a panic button to notify immediately all your registered contacts. The alarm system does not need to be activated to use this function.

Also, the key fob allows you to partially activate your alarm system (ON, partially). This is particularly useful for e.g. safeguarding the downstairs floor while you are sleeping upstairs.

All users may have assigned their own key fob. Via the tab "Alarm history" in your Egardia account you can always see which particular user has turned the alarm system on or off.

Note! In case of a burglar alarm or a panic alarm the gateway will emit a very loud audible signal. A panic alarm can only be turned off using the key pad. Enter a valid PIN code and press the green lock icon button to turn the panic alarm off.



OVERVIEW KEY FOB

1. **"ON" button** – To turn your alarm system on.
2. **"HELP" button** – Press for at least 3 seconds to activate the siren of the gateway and automatically send alarm messages to all your registered contacts. The alarm system does not need to be activated to use this button.
3. **"ON, partially" button** – To turn the alarm system on while you are at home. Configure in your Egardia account which accessories should be active while you are at home and the alarm is turned on.
4. **"OFF" button** – To turn your alarm system off.
5. **Indicator light** – Glows when a signal is being sent to the gateway. To ensure that the signal has been successfully sent hold the button till the indicator light extinguishes.
6. **Battery compartment** – Holds the battery.

INSTALLING THE KEY FOB

The installation process of the Egardia key fob consists of four easy steps.

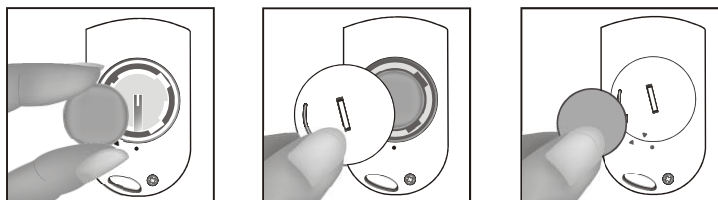
STEP 1.	CHECK CONTENTS	CHECK THE CONTENTS OF THE BOX
STEP 2.	INSERT BATTERY	INSTALL THE BATTERY INTO THE KEY FOB
STEP 3.	ADD TO ALARM SYSTEM	REGISTER THE KEY FOB WITH YOUR EGARDIA ALARM SYSTEM
STEP 4.	CHECK AND TEST	CHECK AND TEST THE KEY FOB

STEP 1: CHECK CONTENTS

Check the contents of the packaging for the following parts:

1. Key fob
2. Bag with one CR2032 3V 230mAh lithium button cell battery

STEP 2: INSERT BATTERY



1. Carefully remove the battery compartment cover by turning it anti-clockwise using e.g. a 5 eurocent coin or a similar coin.
2. Insert the battery as shown, with the plus sign (+) of the battery on top.
3. Replace the cover by turning it clockwise.

STEP 3: ADD TO ALARM SYSTEM

You are now about to register the key fob with your Egardia alarm system.

1. Ensure at your gateway that the alarm is turned off. The top indicator light (Status) and the bottom indicator light (Online) are lit green.
2. Press the "Reset" button at the side of the gateway for at least 5 seconds. The top indicator light (Status) of your gateway flashes green to indicate it is searching for new accessories.
3. Press any button on your key fob for at least 3 seconds. The gateway beeps once to indicate the key fob is successfully registered. The gateway beeps twice to indicate the key fob has already been successfully registered.
4. Press again the "Reset" button at the side of the gateway for at least 5 seconds if no more accessories are being added. The gateway returns to normal operation.
5. Login to your Egardia account and go to the tab "Alarm system". The registered key fob will appear after a few minutes.
6. Rename the key fob for easy recognition.

Please remember to assign the key fob to a registered user of the alarm system. This can be done under the tab "My account" in your Egardia account. Assigning the key fob to a user allows you to monitor which particular user has turned the alarm system on or off.

STEP 4: CHECK AND TEST

To make sure that the key fob functions correctly it is advisable to test the key fob.

Set the alarm system by using the key fob. If your alarm is triggered the key fob has been installed correctly.

Congratulations! The installation is complete.

MAINTENANCE

Battery

The key fob is powered by one CR2032 3V 230mAh lithium button cell battery. Depending on use, the average life of the battery is 2-4 years.

Replacing the battery

1. Ensure that the alarm is turned off.
2. Carefully remove the battery compartment cover by turning it anti-clockwise using e.g. a 5 eurocent coin or a similar coin.
3. Remove the empty battery and replace it by a new CR2032 3V 230mAh lithium button cell battery. The plus sign (+) of the battery should be on top.
4. Replace the cover by turning it clockwise.