

installation guide

Bell box



INSTALLATION GUIDE BELL BOX

Congratulations on the purchase of your Egardia bell box.

Website Egardia
www.egardia.com

Customer Service

Please visit www.egardia.com if you would like further information about the installation and use of Egardia. The answers to a number of frequently asked questions can be found at www.egardia.com/userquestions.

This package has been put together with care. Please contact our customer service if you would like any help during installation or if something is missing from the package. Never return a package without prior instruction from our customer service.

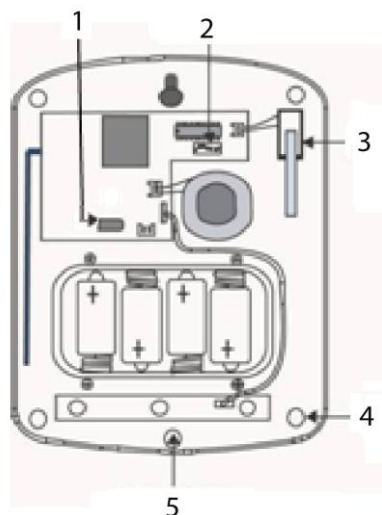
Bell box

The bell box with a maximum siren output of 104 dB will be activated during an alarm. The bell box works wirelessly and is powered by factory installed batteries. There is no need for a connection to a power supply and the installation is extremely easy.

Please note! In some municipalities it is not allowed to sound a siren outside. Please check with your local authorities. Set DIP switch number 5 to "OFF" to deactivate the siren.

Sound and light signals for each type of alarm

	Sound signal	Light signal	Duration
Burglar alarm	Continuous	Continuous	Depends on the settings of DIP switches number 3 and 4
Panic alarm	Continuous	Continuous	
Fire alarm	Beeps of 2 sec.	The 3 LED indicators flash	
Flood alarm	Beeps of 2 sec.	The 3 LED indicators flash	



OVERVIEW BELL BOX

- Battery switch** – To turn the bell box on or off.
- DIP switches** – To adjust the settings of the bell box.
- Tamper switch** – The alarm is triggered when this switch is activated.
- Mounting holes (4x)** – To mount the bell box using screws.
- Safety screw** – Prevents the opening of the bell box.

Tampering

The bell box is secured with a tamper switch. Removing the bell box from the wall or removing the cover of the bell box will trigger an alarm. Temporarily deactivate the tamper switch while mounting the bell box to the exterior wall.

Confirmation sounds

The bell box can be set to beep to confirm the alarm system has been turned on or off. Also the bell box can be set to beep during the delay period. These confirmation sounds are deactivated by default. You may activate these sounds in your Egardia account.

- Login to your Egardia account and click on the tab "Alarm system".
- Click under heading "Accessories" on "Change settings".
- Then click "Set bell box" and choose the preferred settings.
- Click "Confirm" to save the settings.

For more information read the appendices:

Appendix A – Audible and light signals bell box

Appendix B – DIP switches bell box

INSTALLING THE BELL BOX

The installation process of the Egardia bell box consists of four easy steps.

Please note! Before registering the bell box with your alarm system at least one other Egardia accessory (e.g. a door/window sensor or a motion detector) has to be registered.

STEP 1.	CHECK CONTENTS	CHECK THE CONTENTS OF THE BOX
STEP 2.	ADD TO ALARM SYSTEM	REGISTER THE BELL BOX WITH YOUR EGARDIA ALARM SYSTEM
STEP 3.	MOUNT BELL BOX	DETERMINE THE LOCATION AND MOUNT THE BELL BOX
STEP 4.	CHECK AND TEST	CHECK AND TEST THE BELL BOX

STEP 1: CHECK CONTENTS

Check the contents of the packaging for the following parts:

1. Bell box (batteries are factory installed in the bell box)
2. Bag containing screws and plugs

Please note! Set DIP switch number 1 back to "OFF" after the bell box has been successfully registered. The bell box returns to normal operation.

STEP 2: ADD TO ALARM SYSTEM

You are now about to register the bell box with your Egardia alarm system.

1. Ensure at your gateway that the alarm is turned off. The top indicator light (Status) and the bottom indicator light (Online) are lit green.
2. Place the bell box on a flat surface. Remove the safety screw at the bottom of the bell box and remove the cover.
3. Press the "Reset" button at the side of the gateway for at least 5 seconds. The top indicator light (Status) of your gateway flashes green to indicate it is searching for new accessories.
4. Switch the battery switch of the bell box to "ON" to activate the batteries. All LED indicators of the bell box will glow and a beep will sound.
5. Set DIP switch number 1 to "ON". LED 1 and LED 3 glow shortly and a short beep sounds. After 3 seconds all LED indicators of the bell box flash once. The gateway beeps once to indicate the bell box is successfully registered. To confirm LED 1 and LED 3 of the bell box will flash once and a short beep sounds. The gateway beeps twice to indicate the bell box has already been successfully registered.
6. Set DIP switch number 1 to "OFF". LED 2 of the bell box flashes once and a beep sounds to confirm the bell box has now returned to normal operation.
7. Press again the "Reset" button at the side of the gateway for at least 5 seconds if no more accessories are being added. The gateway returns to normal operation.
8. Login to your Egardia account and go to the tab "Alarm system". The registered bell box will appear after a few minutes.
9. Rename the bell box for easy recognition.
10. Switch the battery switch of the bell box to "OFF" to temporarily deactivate the tamper switch.
11. Set the other DIP switches of the bell box as desired.
12. Do not replace the cover of the bell box yet.

Functions other DIP switches

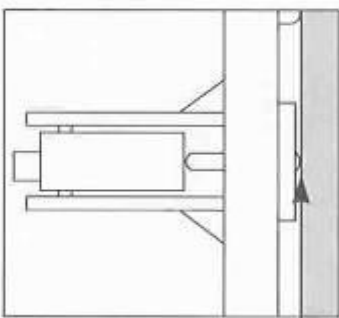
- DIP switch number 2: configure whether the LED indicators of the bell box will keep glowing after an alarm. When the alarm system is turned off the bell box will sound 2 beeps to confirm an alarm has been triggered.

DIP switch 2	Alarm system	Duration active LED indicators
ON	ON	Until the alarm system is turned off
ON	OFF	Depends on settings of DIP switch 3 and 4
OFF	ON/OFF	Depends on settings of DIP switch 3 and 4

- DIP switch number 3 and 4: configure the duration that the bell box emits audible and light signals during an alarm. The default duration is 3 minutes.

DIP switch 3	DIP switch 4	Duration sound and light signals
ON	OFF	5 minutes
OFF	ON	10 minutes
OFF	OFF	3 minutes
ON	ON	1 second (test)

- DIP switch number 5: configure whether the siren has to be activated or deactivated. The siren is activated by default.
- DIP switch number 6: to erase the memory of the bell box. To erase the memory, switch the battery switch to "OFF". Now wait for 5 minutes and set DIP switch number 6 to "ON". Switch the battery switch back to "ON". The LED indicators will flash in sequence (from left to right and back) and a beep sounds to confirm. Set DIP switch number 6 back to "OFF".
- DIP switch number 7: configure whether the control function has to be activated or deactivated. The control function is activated by default so that the bell box regularly transmits a control signal to the Egardia gateway.



The tamper switch should be fully pressed against the wall

STEP 3: MOUNT BELL BOX

Place the bell box in a highly visible location on the exterior wall. Before mounting use the key fob to test the desired mounting place is within range of the gateway.

Important guidelines

- The optimal location for the bell box is highly visible but also high enough to be out of reach of a burglar.
- The end of the tamper switch protrudes out of the backside of the bell box so that an alarm is triggered when the bell box is pulled from the wall. Ensure during mounting whether the tamper switch is fully pressed against the wall.

Instructions

1. Ensure that the battery switch is set to "OFF" so the bell box can be mounted without triggering a tamper alarm.
2. Use the 4 pre-punched holes in the bell box to mark the drill holes on the wall.
3. Drill the holes and use the plugs for stone or plaster walls.
4. Secure the back of the bell box to the wall using the screws.
5. Ensure DIP switch number 1 is set on "OFF" and that the other DIP switches are set as desired.
6. Switch the battery switch to "ON" to activate the tamper switch.
7. Replace the cover and secure with the security screw at the bottom.

STEP 4: CHECK AND TEST

To make sure that the bell box functions correctly it is advisable to test the bell box.

Turn the alarm system on by using your remote control (red button) and trigger an alarm with a motion detector or door/window sensor. When the bell box emits sound and/or light signals the bell box has been installed correctly.

Please note! When the tamper switch is still deactivated, the bell box will not react. When all LED indicators flash 3 times when the alarm is turned on, the tamper switch has not been placed correctly.

Congratulations! The installation is complete.

MAINTENANCE

Batteries

The bell box is powered by four 1,5V D alkaline batteries. Depending on use, the average life of the battery is 2-4 years. The bell box itself will indicate when the battery is low. When the battery has power left for about one month you will receive the following warnings:

1. When the alarm system is turned on the bell box beeps five times and all LED indicators flash three times. When the alarm system is turned off the bell box beeps five times and all LED indicators will flash in sequence twice (from left to right and back).
2. In your Egardia account you will see the message "Battery low level" under the tab "Alarm history".
3. You will receive a one-time message by telephone, SMS or email.
4. The central indicator light (Alarm) of your gateway is lit yellow. After the batteries have been replaced the gateway will return to normal status.

Replacing the batteries

1. Login to your Egardia account and click on the tab "Alarm system".
2. Click under heading "Accessories" on "Change settings".
3. Then click "Set bell box" and select "Tamper function – Deactivate temporarily".
4. Click "Confirm" and the tamper switch is now deactivated for 1 hour.
5. Remove the safety screw at the bottom of the bell box and remove the cover.
6. Switch the battery switch to "OFF".
7. Remove the four screws of the battery compartment and remove the old batteries.
8. Wait for at least 5 minutes and insert four new 1,5V D alkaline batteries.
9. Switch the battery switch back to "ON" and close the battery compartment using the screws.
10. Replace the cover and secure with the security screw at the bottom.
11. Login to your Egardia account and click on the tab "Alarm system".
12. Click under heading "Accessories" on "Change settings".
13. Then click "Set bell box" and select "Tamper function – Activate".
14. Click "Confirm" and the tamper switch is now reactivated.

Please note! When the tamper switch is still deactivated, the bell box will not react.

APPENDICES

A – Audible and light signals bell box

B – DIP switches bell box

APPENDIX A: SOUND AND LIGHT SIGNALS BELL BOX

The table below lists the various types of sound and light signals the bell box can emit.

No delay time set

Alarm system	Sound signal	Light signal
Activate – ON	1 beep*	All LED indicators flash 1x
Activate – ON, partially	1 beep*	All LED indicators flash 1x
Deactivate	2 beeps*	LED indicators flash in sequence (from left to right and back)
Deactivate – Alarm in memory	Beep of 3 sec.	LED indicators flash in sequence 2x (from left to right and back)

Delay time set

Alarm system	Sound signal	Light signal
Activate – ON	Throughout delay time one beep per second	All LED indicators flash 1x
Activate – ON, partially	Throughout delay time one beep per second	All LED indicators flash 1x
Deactivate	2 beeps	LED indicators flash in sequence (from left to right and back)
Deactivate – Alarm in memory	Beep of 3 sec.	LED indicators flash in sequence 2x (from left to right and back)
Activate – Battery low	5 beeps	All LED indicators flash 3x
Deactivate – Battery low	5 beeps	LED indicators flash in sequence 2x (from left to right and back)
Activate – Tamper switch is not fully pressed to the wall	5 beeps	All LED indicators flash 3x
Deactivate – Tamper switch is not fully pressed to the wall	2 beeps*	LED indicators flash in sequence 4x (from left to right and back)

* When the siren is deactivated those sound signals cannot be heard.

APPENDIX B: DIP SWITCHES BELL BOX

The Egardia bell box features 7 DIP switches that allow you to adjust the operation of the bell box. Here below you will find an overview of the operation of the various DIP switches.

DIP switch 1		Installation
OFF		Default
ON		Installation mode
DIP switch 2		Duration active LED indicators
OFF		During alarm
ON		Until alarm system is turned off
DIP switch 3	DIP switch 4	Duration sound and light signals
OFF	OFF	3 min.
ON	OFF	5 min.
OFF	ON	10 min.
ON	ON	1 second (test)
DIP switch 5		Siren
OFF		Siren deactivated
ON		Siren activated
DIP switch 6		Erase memory
OFF		Default
ON		Erase memory
DIP switch 7		Control function
OFF		Control function off
ON		Control function on